

### Maximum Reliability and Efficiency for Variable, High Resolution Images on Flexible Packaging and Labels

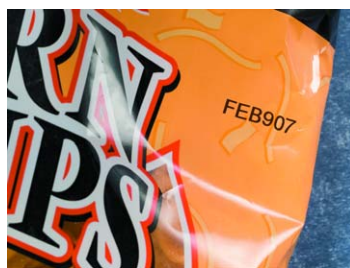
- **Highest Reliability - No ribbon-related downtime**
- **Lowest cost of ownership**
- **Simplest operation**
- **Flexibility to adapt to changing production needs**



# Superior Performance and Reliability

## Videojet DataFlex® Plus Thermal Transfer Overprinter

The Videojet DataFlex Plus thermal transfer overprinter (TTO) delivers high resolution images on flexible packaging, while minimizing downtime and costs associated with ribbon breaks and production changeovers. For marking variable information such as dates, times, batch codes, ingredients, logos and marketing information onto flexible film packaging, labels or glossy cards, the DataFlex Plus provides the ultimate in productivity and efficiency.



8.4-inch color touchscreen



Intermittent and continuous operation from one unit



Simple ribbon cassette for easy changeovers



**BATCH : AZ37YY1  
PROD : 08A05 14:55  
OP ID : 1895A**

Standard Printing

**BATCH : AZ37YY1  
PROD : 08A05 14:55  
OP ID : 1895A**

Interleave Printing

## Increased Production Line Uptime

The DataFlex Plus features a proven, clutchless ribbon drive that contains few wear parts, which increases mechanical reliability and minimizes maintenance-related downtime. Through the use of motors and software, optimal ribbon tension is consistently maintained, virtually eliminating downtime caused by ribbon breaks and false ribbon breaks. The 1,000 meter ribbon length is the longest standard length on the market, which means less frequent ribbon changes and higher production line efficiency. The DataFlex Plus features the simplest TTO ribbon cassette on the market, making ribbon changeovers fast, easy and nearly fail safe.

## Maximum Flexibility

The DataFlex Plus has the built-in capability to change between intermittent and continuous modes or left hand and right hand operation — quickly and easily — in the same unit. This flexible system eliminates the need for additional investment in more printers if production requirements change. Serial, Ethernet and USB communications standard in this printer deliver the most comprehensive communications package in the industry. The DataFlex Plus also provides the ability to control up to four printers from one controller, providing a simple and cost-effective solution for applications that need more than one imaging system.



## Lowest Cost of Ownership

The DataFlex Plus is designed to lower total cost of ownership. The bi-directional ribbon drive utilizes motors that drive both the ribbon unwind and re-wind reels, allowing unused ribbon to be recaptured after each print. This maintains a 0.5 mm gap between prints from the beginning to the end of a ribbon roll, creating more prints per roll and ensuring the highest possible ribbon efficiency. The bi-directional drive eliminates over-printing and provides consistent image quality. The DataFlex Plus also offers interleave printing to cut ribbon expense in half and double the number of prints per roll with a unique ribbon saving technique that works in both continuous and intermittent applications.

## Easy to Learn and Use

The intuitive, graphical user interface and color touch screen incorporate easy to learn, icon-based controls and a WYSIWYG image display to reduce downloading and entry errors. There are three levels of password protection, for added security. The on-board diagnostics available in the DataFlex Plus make trouble shooting quick and easy, resulting in less downtime and reduced training requirements.

## High Quality Thermal Transfer Printing

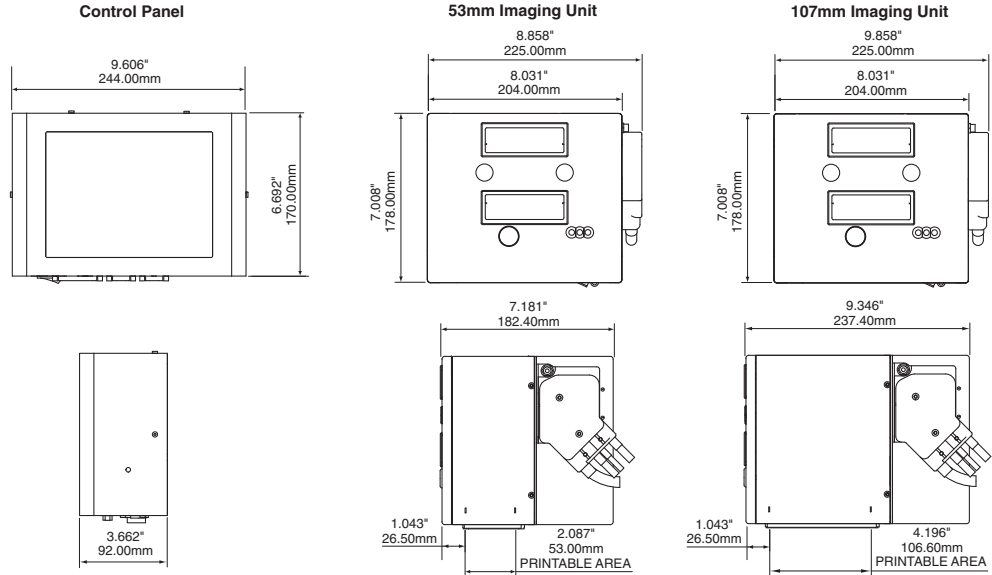
The DataFlex Plus delivers high-resolution images on a wide variety of flexible packaging, labels and other materials. The DataFlex Plus system allows for on-line printing of variable and real-time data such as best by dates, times, batch/lot codes, ingredients listings, bar codes and logos with crisp, clear images. This efficient printer is well-suited for applications in the snack food, bakery, confectionery, frozen and refrigerated foods, bagged fresh vegetables and dried fruits, meats, coffee, hardware and pharmaceutical markets.

## Videojet TotalSource® Services

The TotalSource system is the finest and most complete technical support program in the business. It includes everything from expert applications assistance, operator training and a full spectrum of maintenance services. The TotalSource program ensures total customer satisfaction.

**Support when and where you need it**





### Specifications

#### Printhead

55 mm or 110 mm, 300dpi (12 dot/mm)

#### Print Area

##### 53 mm Unit

*Intermittent Printing Mode*

2.1" (53 mm) wide x

3.0" (75 mm) long

*Continuous Printing Mode*

2.1" (53 mm) wide x

5.3" (135 mm) long

##### 107 mm Unit

*Intermittent Printing Mode*

4.2" (107 mm) wide x

3.0" (75 mm) long

*Continuous Printing Mode*

4.2" (107 mm) wide x

7.9" (200 mm) long

#### Maximum Print Speed

##### 53 mm Unit

*Intermittent Mode*

31.5 in./sec (800 mm/sec)

*Continuous Mode*

39.4 in./sec (1000 mm/sec)

##### 107 mm Unit

*Intermittent Mode*

27.5 in./sec (700 mm/sec)

*Continuous Mode*

31.4 in./sec (800 mm/sec)

#### Operator Interface

8.4-inch TFT SVGA (800x600) full-color

LCD and touch screen

WYSIWYG print preview

Full on-board diagnostics

3 levels of password protection

Extensive language support

#### Ribbon Range

Full assortment of wax / resin and resin inks

#### Maximum Ribbon Length

##### 53 mm Unit

3,281 feet (1000 meters)

##### 107 mm Unit

1,969 feet (600 meters)

#### Ribbon Widths

0.8" (20 mm) min

4.3" (110 mm) max

#### Nominal Ribbon Waste Between

##### Successive Prints

0.002" (0.5 mm)

#### Printing Capabilities

Full downloadable font support to Windows® TrueType® (including multiple languages and Unicode support)

Fixed, variable and merged text fields

Flexible date/time formats

Flexible shift code formats

Auto best before date calculations and concession management

Auto incrementing/decrementing text, counters and bar codes

Multiple graphic formats supported (up to maximum print area)

Link fields to databases

Scalable text and text blocks

Scalable text and text blocks

Scalable text and text blocks

Scalable text and text blocks

#### Bar Codes

EAN 8, EAN 13, UPC-A, UPC-E,

Code 39, EAN 128, Code 128, ITF, RSS

(including 2D composite codes); others

available upon request

#### Power Supply

90-264V

#### Air Supply

6 Bar. 90psi, uncontaminated 1.0ml/cycle (max)

#### Operating Temperature

41°-104°F (5°- 40° C )

#### External Inputs

3 PNP inputs

#### External Outputs

2 relay outputs and 2 PNP +24V outputs

#### External Communications

RS232, Ethernet, USB memory stick

support, Binary and ASCII comms

protocols and Windows drivers

#### Remote Coder Configuration software

CLARITY Configuration Manager

"Off-line" set up and parameter storage

available as standard

#### Image Design Software

CLARISOFT

#### Network Management Software

CLARINET



© 2008 Videojet Technologies Inc. All rights reserved. Videojet Technologies Inc.'s policy is one of continued product improvement. We reserve the right to alter design and/or specifications without notice. Videojet, TotalSource, and Videojet DataFlex are registered trademarks of Videojet Technologies Inc. Windows is a registered trademark of Microsoft Corporation. TrueType is a registered trademark of Apple Computer, Inc.



800-843-3610 • [www.videojet.com](http://www.videojet.com) • [info@videojet.com](mailto:info@videojet.com)

Videojet Technologies Inc. • 1500 Mittel Boulevard

Wood Dale IL • 60191-1073 • USA

Phone: 630-860-7300 • Fax: 630-616-3623



Part No. SL000418

DFlexPlus-0608

Printed in U.S.A.